



# Virginia Healthcare Workforce Briefs

Indicators from the Bureau of Labor Statistics'  
Current Employment Statistics Survey  
**Series 1: State & National Employment**

Series 1, Issue 76

July 2018

## Highlights

- ◆ According to preliminary estimates, Virginia's Health Care & Social Assistance (HC&SA) sector experienced no employment change in June. However, May's revised employment estimate now indicates that Virginia's HC&SA sector added 300 jobs during the previous month. During the first half of 2018, employment in Virginia's HC&SA sector increased by 4,100.
- ◆ With a gain of 1,300 in June, Virginia's total nonfarm payroll has now increased for each of the first six months of 2018. However, June's increase represents the smallest monthly gain so far this year. Virginia's total nonfarm payroll has increased by 47,800 so far this year.
- ◆ After increasing by 34,900 jobs in May, employment in the national HC&SA sector grew by an additional 34,700 in June. This gain represents a one-month annualized employment growth rate of 2.1%, which is consistent with its current three-month annualized employment growth rate as well.
- ◆ For the second consecutive month, the nation's total nonfarm payroll increased by more than 200,000. In June, the nation's total nonfarm payroll increased by 213,000. This gain translates into a one-month annualized growth rate of 1.7%.

### Inside this Brief:

Virginia HC&SA Employment	2
Virginia Employment	2
National Employment	3
State Employment Growth	3
About the Data	4

Data in the report are seasonally adjusted. Self-employed persons, including health professionals in private practice, are not included.

## Data in Brief

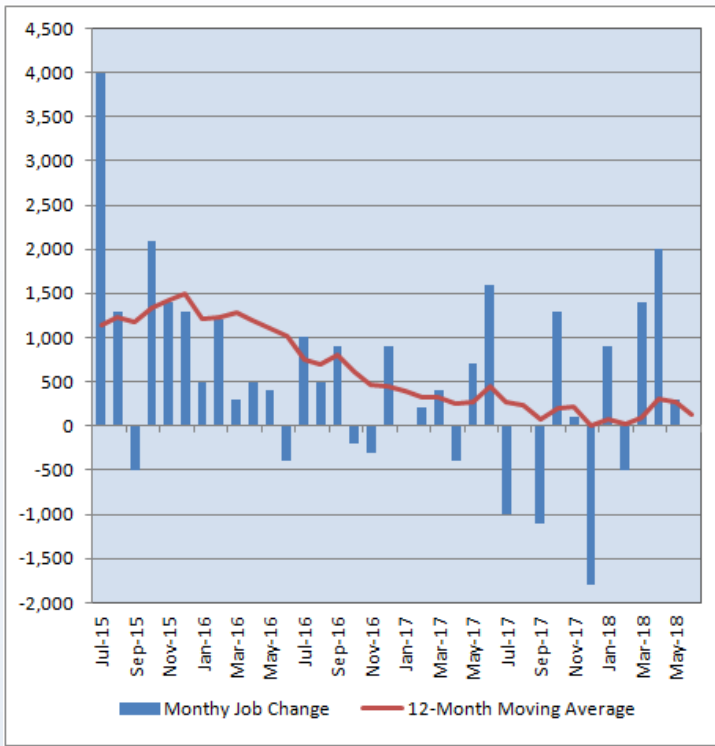
Seasonally Adjusted*	Employment, in Thousands				Growth Rate, Annualized		
	June 2017	Mar 2018	May 2018	June 2018	12 Month	3 Month	1 Month
<b>Nonfarm, Total</b>							
Virginia	3,958.1	3,989.0	4,000.6	4,001.9	1.1%	1.3%	0.4%
National	146,538.0	148,280.0	148,699.0	148,912.0	1.6%	1.7%	1.7%
<b>Health Care &amp; Social Assistance</b>							
Virginia	436.1	435.4	437.7	437.7	0.4%	2.1%	0.0%
National	19,515.1	19,792.8	19,860.0	19,894.7	1.9%	2.1%	2.1%
<b>All Other Nonfarm</b>							
Virginia	3,522.0	3,553.6	3,562.9	3,564.2	1.2%	1.2%	0.4%
National	127,022.9	128,487.2	128,839.0	129,017.3	1.6%	1.7%	1.7%

Preliminary estimates are italicized

\*Seasonally adjusted data are adjusted by the Bureau of Labor Statistics to account for weather, holidays and other seasonal changes. Economists use seasonally adjusted data to reveal underlying trends over time. This series uses seasonally adjusted data exclusively. When comparing data in this series to other HWDC series, or publications from other sources, it is important to note whether the data reported have been seasonally adjusted.

## Virginia HC&SA Employment

**Figure 1: Monthly Change in Employment in Virginia’s Health Care & Social Assistance Sector, Seasonally Adjusted.**



According to preliminary data released on Friday, July 20, 2018, by the U.S. Department of Labor, Bureau of Labor Statistics, Virginia’s HC&SA sector experienced no employment change in June. Meanwhile, May’s preliminary employment estimate was revised upward by 300 jobs. With this revision, Virginia’s HC&SA sector was able to avoid two consecutive months in which there was no employment growth in the state.

Employment in Virginia’s HC&SA sector has grown strongly over the first half of 2018. In fact, Virginia’s HC&SA sector has experienced just one month of negative employment growth so far in 2018. In total, Virginia’s HC&SA sector has created 4,100 HC&SA jobs across the state in 2018. During the first six months of 2017, employment in Virginia’s HC&SA sector had only increased by 2,500.

Despite this improvement, HC&SA employment growth does seem to be slowing down. After increasing by 3,400 in March and April, HC&SA employment has only grown by 300 in May and June. In addition, HC&SA employment has only grown by 0.4% over the past 12 months.

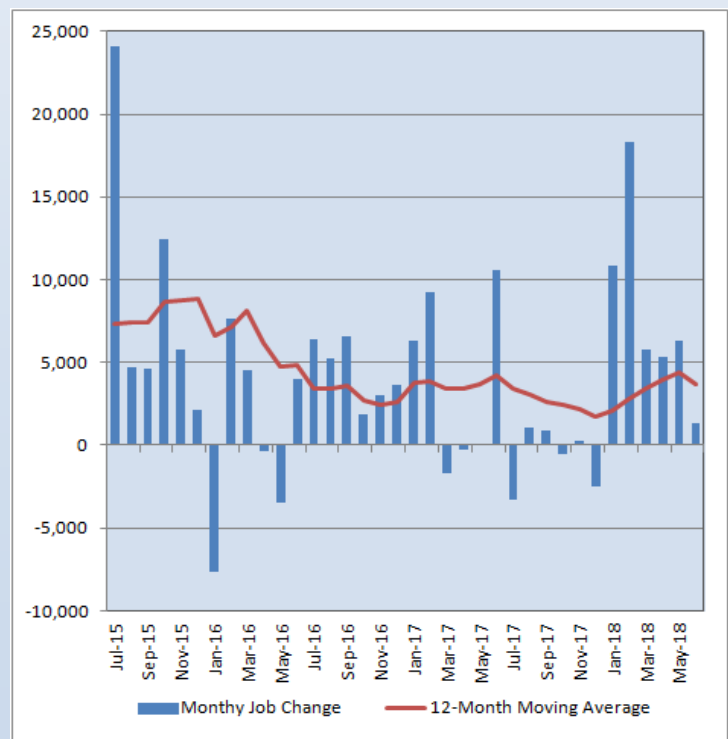
## Virginia Employment

Despite the lack of employment growth in Virginia’s HC&SA sector in June, the state’s total nonfarm payroll still increased by 1,300 during the month, a gain that represents a 0.4% annualized growth rate. In addition, this gain represents the sixth consecutive month in which Virginia’s total nonfarm payroll has increased.

However, this month’s increase was substantially lower than the gains observed earlier in 2018. Thanks in large part to the gains observed in January and February, Virginia’s total nonfarm payroll increased by an average of 9,300 jobs per month over the first five months of 2018. In addition, there was no month between January and May in which the state’s total nonfarm payroll increased by less than 5,300.

With June’s relatively weak employment growth, the 12-month moving average of the change in Virginia’s total nonfarm payroll fell for the first time since December. Over the past 12 months, Virginia’s total nonfarm payroll has increased by an average of 3,650 jobs per month. In May, this moving average reached 4,425 jobs per month, which represents its highest value in nearly two years.

**Figure 2: Monthly Change in Employment in Virginia’s Total Non-farm Payroll, Seasonally Adjusted.**

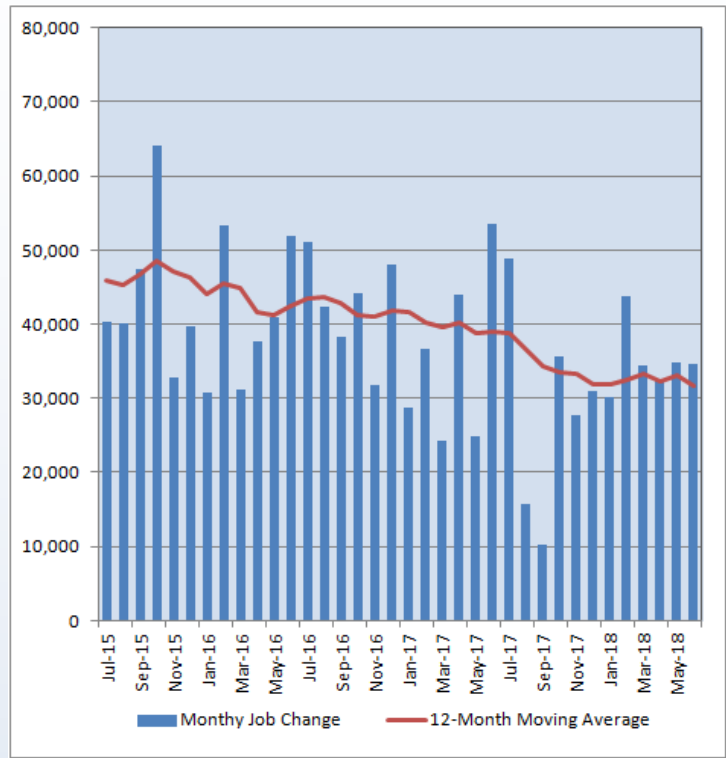


### National Employment

Over the past several months, the national HC&SA sector has produced very consistent employment growth, and this trend continued unabated in June. Between March and May, employment in the national HC&SA sector increased by an average of 33,900 jobs per month. June’s employment gain improves slightly on this short-term average as the national HC&SA sector created 34,700 new jobs during the month. This gain represents a one-month annualized employment growth rate of 2.1%. During the first half of 2018, the national HC&SA sector created 210,300 new jobs across the country. This year-to-date employment gain is slightly below the 212,100 HC&SA jobs that were created through the first six months of 2017.

As for the overall national economy, the nation’s total nonfarm payroll increased by 213,000 in June. This gain represents a one-month annualized growth rate of 1.7%. In addition, this gain also represents the first time since last November in which the nation’s total nonfarm payroll has grown by more than 200,000 in consecutive months. So far this year, the nation’s total nonfarm payroll has increased by 1.29 million.

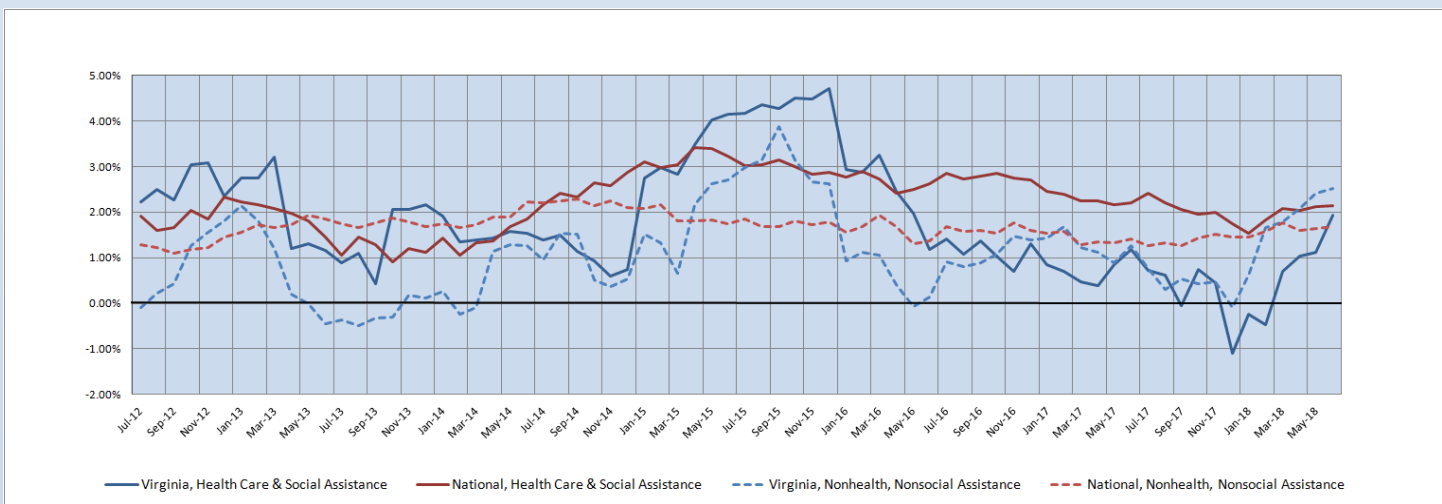
**Figure 3: Monthly Change in Employment in National Health Care & Social Assistance Sector, Seasonally Adjusted**



### State Employment Growth

Although Virginia’s HC&SA sector did not enjoy any positive employment growth in June, its six-month employment growth rate moving average still experienced a significant jump during the month from 1.12% to 1.93%. With this increase, the six-month moving average of the employment growth rate in Virginia’s HC&SA sector is continuing its strong turnaround from the negative growth rates observed earlier this year. In fact, June’s moving average represents its highest value in more than two years. Regardless, it remains below the comparable moving average for Virginia’s total nonfarm payroll, which increased from 2.41% to 2.52% in June. As for the national economy, the six-month moving averages of the employment growth rate in the HC&SA sector and total nonfarm payroll saw small increases to 2.15% and 1.69%, respectively.

**Figure 4: Six-Month Moving Average, Employment Growth, Seasonally Adjusted**



Healthcare Workforce  
Data Center

Perimeter Center  
9960 Mayland Drive, Suite 300  
Henrico, VA 23233-1463

Phone: (804) 367-2115  
Fax: (804) 527-4434  
E-mail: [hwdc@dhp.virginia.gov](mailto:hwdc@dhp.virginia.gov)

[www.dhp.virginia.gov/hwdc/](http://www.dhp.virginia.gov/hwdc/)

*HWDC Staff:*

Elizabeth Carter, Ph.D. <i>Executive Director</i>	Yetty Shobo, Ph.D. <i>Deputy Director</i>
Laura Jackson <i>Operations Manager</i>	Christopher Coyle <i>Research Assistant</i>

Follow us on. . .

Tumblr: <http://vahwdc.tumblr.com/>

The Department of Health Professions Healthcare Workforce Data Center works to improve the data collection and measurement of Virginia's healthcare workforce through regular assessment of workforce supply and demand issues among the 80 professions and 350,000 practitioners licensed in Virginia by DHP.

The HWDC collects data on Virginia's licensed health professionals through surveys completed during the online license renewal and application process. Survey results and data may be accessed on our website: [www.dhp.virginia.gov/hwdc/](http://www.dhp.virginia.gov/hwdc/).

The HWDC also provides a series of Virginia Healthcare Workforce Briefs based on data collected by the US Department of Labor's Bureau of Labor Statistics and the US Department of Commerce' Bureau of Economic Analysis.

Virginia Healthcare Workforce Briefs:

Series 1: State & National Employment (Monthly)

Series 2: Virginia Regional Employment (Monthly)

Series 3: Income & Compensation (Quarterly)

## About the Data

Data in this report are from the US Department of Labor, Bureau of Labor Statistics' Current Employment Statistics program. The CES program surveys about 143,000 businesses and government agencies monthly. Unless otherwise noted, this series uses seasonally-adjusted data that removes seasonal variations related to weather, holidays, weekends, seasons and other predictable variations. This allows us to better examine underlying trends in the labor market. Data from recent months are preliminary and subject to revision in future releases from the CES. Revisions will be reported in future editions of this series. Unless otherwise noted, the CES data presented in this series:

### Includes:

- ◆ Data on employed individuals drawing a paycheck (payroll employees).
- ◆ All employees, regardless of role, occupation or hours worked.
- ◆ HC&SA employees in the private sector only.
- ◆ Persons employed by health professionals in private practice.
- ◆ Both government and private sector workers in nonfarm employment data.

### Does not include:

- ◆ Self-employed workers or volunteers, including health professionals in private practice.
- ◆ HC&SA employees in the public sector. (These are counted as government workers in monthly reports).
- ◆ Information on hours worked or the quality of employment.
- ◆ Government workers in HC&SA level data. (Government workers, regardless of occupation and role, are classified as public sector employees).